



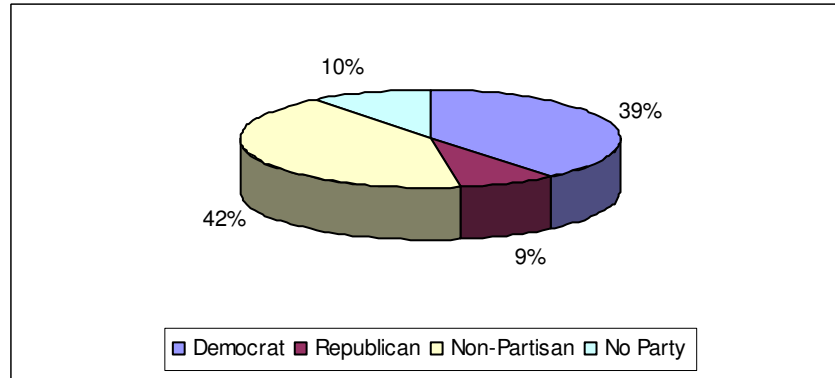
# May 4, 2010 Post Election Information

- **1,068** Voting Precincts
- **471** Voting Locations

## Voter Registration:

- 384,798 Democrat **39%**
- 84,486 Republican **9%**
- 415,808 Non-Partisan **42%**
- 100,385 No Party **10%**
- **985,477** Total

**Registered Voters by Party Affiliation**



## Turnout:

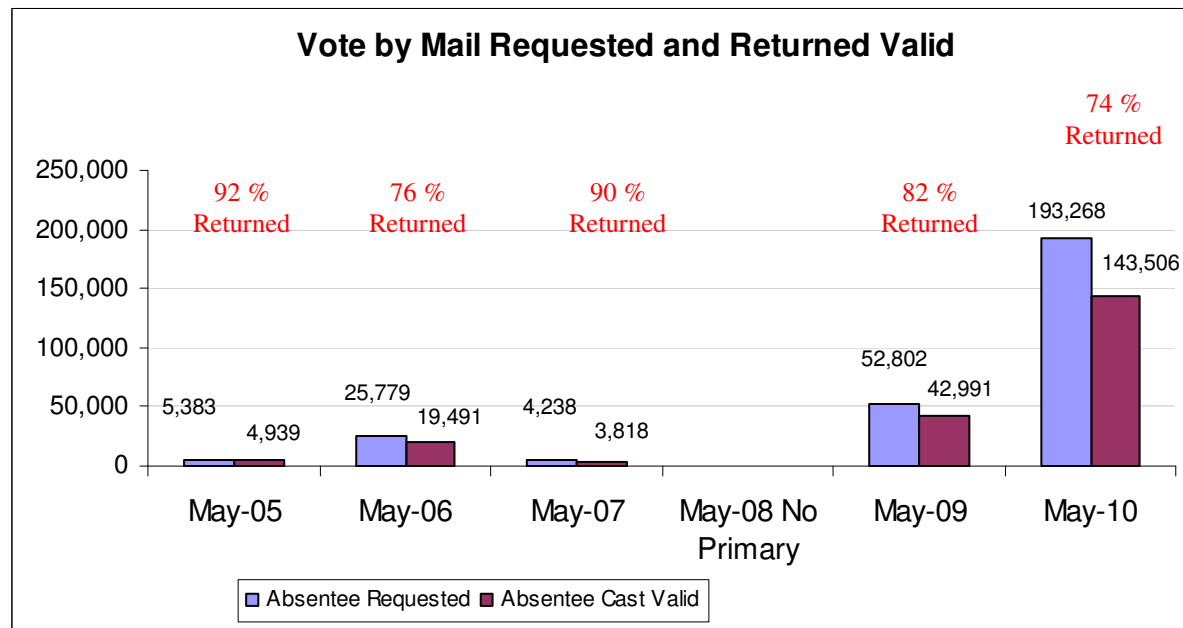
- **234,594** Ballots cast total
- **24%** Total Turnout
- **143,506** (61%) Ballots cast by mail (includes in-house voters)
- **86,597** (37%) Ballots cast on Election Day
- **4,425** ( 2%) Provisional
- **66** (.02%) Post Election Day (ED) ballots scanned following the election and ballots cast by 17-year-old voters

## Vote by Mail:

- **193,268** Ballots Requested
- Ballot requests by party:**

- 114,439 Democratic
- 51,579 Republican
- 24,230 Issues Only
- 1,292 Constitution
- 1,125 Libertarian
- 485 Green
- 118 Socialist
- **150,717** Total Ballots Returned **78%**
- **143,506** Ballots Returned Valid **74%**
- 477 In-House voters

**Vote by Mail Requested and Returned Valid**





# May 4, 2010 Post Election Information

## Challenged Vote by Mail Ballots:

- 7,211 total challenged
- 2,498 Ballot not placed in Identification Envelope
- 2,418 Ballot arrived late
- 839 No Identification on the Identification Envelope
- 593 Did not return 10-Z form  
(10-Z required when changing political parties.)
- 300 Identification Envelope not returned
- 221 No signature on the Identification Envelope
- 179 No printed name on Identification Envelope
- 86 No ballot returned with Identification Envelope
- 42 Identification Envelope not completed
- 24 Identification Envelope not sealed
- 3 No ballot stub, or stub removed
- 3 Overseas Citizen not eligible to vote when the voter left the county
- 2 Invalid signature on the Identification Envelope
- 1 Returned Vote by Mail ballot to a polling location
- 1 Overseas Questionnaire not returned
- 1 Not a County resident

## Provisional Ballots Cast:

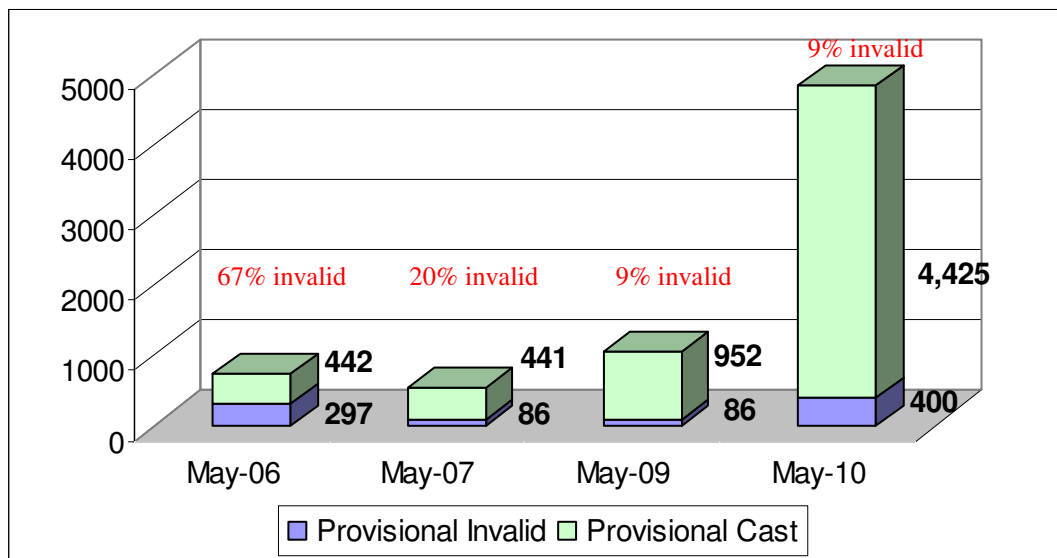
- 4,425
- 400 Challenged Provisional Ballots
- 138 Voted in the incorrect county or state
- 87 Voter not registered in Ohio
- 76 Missing information
- 59 Voter already voted
- 21 Empty envelope
- 9 No signature of the envelope
- 8 Failure to provide acceptable identification
- 2 Questionable/sent to the Board for consideration

## Vote by Mail Valid Ballots Cast by Party

### May 2010

60%	Vote by Mail ballots cast Democrat	85,412
26%	Vote by Mail ballots cast Republican	37,991
13%	Vote by Mail ballots cast Nonpartisan	18,278
1%	Vote by Mail ballots cast minor party	1,825

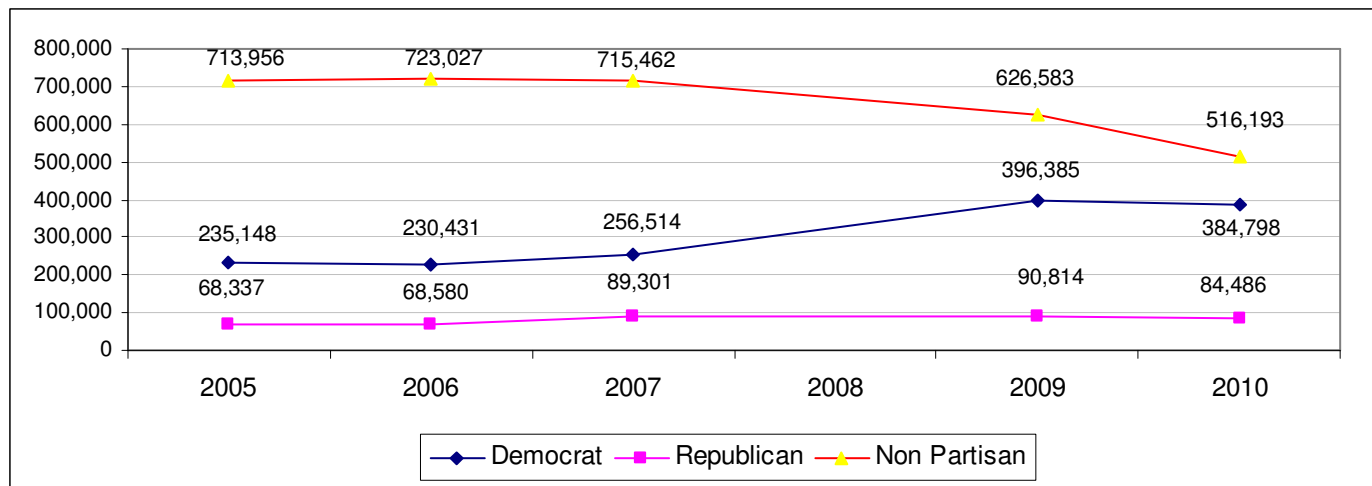
60% of Democrats voted by mail of all the Dem. who voted in the election  
 61% of Republicans voted by mail of all the Rep. who voted in the election  
 62% of Nonpartisans voted by mail of all the Non-p.who voted in the election





# May 4, 2010 Post Election Information

## Voter Registration Trend Comparisons for May Primary Elections:

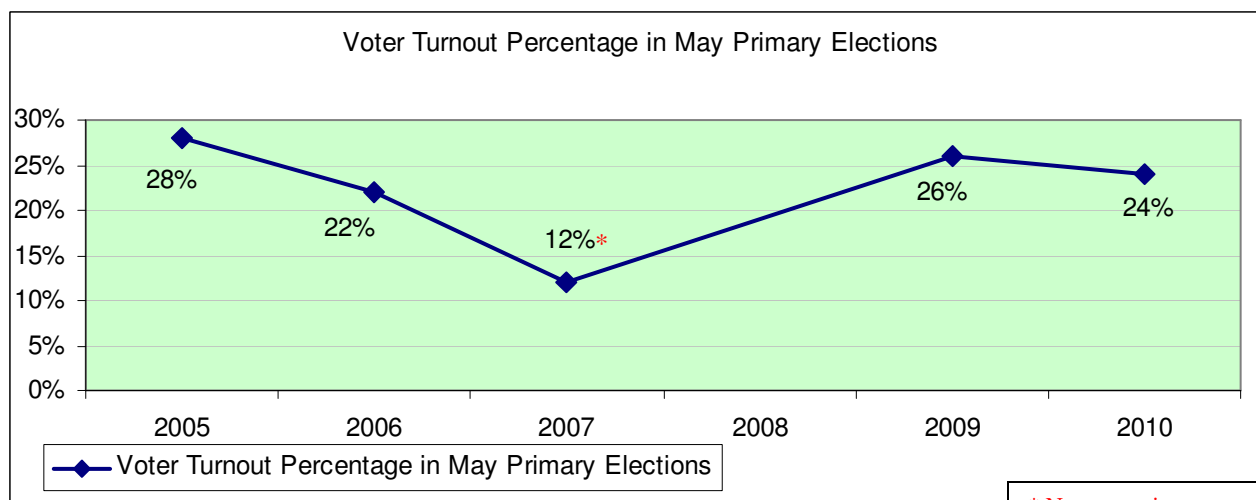


### Voters by Party

The total number of all registered voters at the time of May Primary Elections by party affiliation.

(No May Primary in 2008. The 2008 Primary Election was held in March)

## Voter Turnout Trend Comparisons for May Primary Elections:



\* No county issues, state issues, or large cities were in the 2007 May Election.

### Voter Turnout by Percentage

#### 2010 May Primary 24%

Reg. Voters	Ballots Cast
985,477	234,594

#### 2009 May Primary 26%

Reg. Voters	Ballots Cast
276,906	72,477

#### 2007 May Primary 12%

Reg. Voters	Ballots Cast
328,418	40,326

#### 2006 May Primary 22%

Reg. Voters	Ballots Cast
1,021,581	222,455

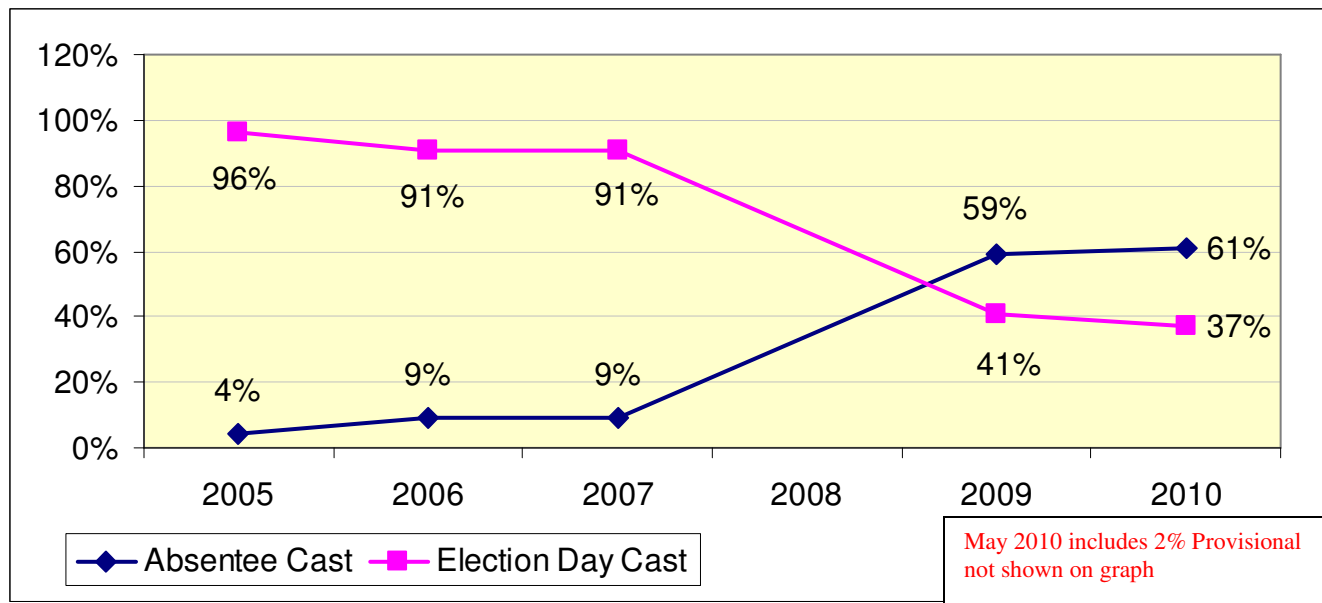
#### 2005 May Primary 28%

Reg. Voters	Ballots Cast
365,184	102,279



# May 4, 2010 Post Election Information

## Vote by Mail/Absentee Ballots Cast Valid Compared to Election Day Ballots Cast in May Primary Elections



### 2010 May Primary

143,506 Absentee ballots cast valid  
234,594 Total ballots cast

### 2009 May Primary

42,991 Absentee ballots cast valid  
72,447 Total ballots cast

### 2007 May Primary

3,818 Absentee ballots cast valid  
40,326 Total ballots cast

### 2006 May Primary

19,491 Absentee ballots cast valid  
222,455 Total ballots cast

### 2005 May Primary

4,939 Absentee ballots cast valid  
102,279 Total ballots cast

### Political Subdivisions:

- 59 Municipalities
- 4 Congressional Districts All of 10, 11, parts of 13 & 14
- 5 State Senate Districts All of 21, 23, 24, 25, parts of 18
- 13 State House Districts All of 7 – 18 and parts of 98
- 2 State School Board Districts
- 31 City/Local School Districts
- 9 Library Districts

### 49 Issues:

- 2 State
- 1 County
- 1 Municipal
- 11 School
- 1 Library
- 15 Local Option
- 7 Charter Amendment
- 3 Zoning Amendment
- 2 Municipal Income Tax
- 6 Tax Levies



# May 4, 2010 Post Election Information

## 1,293 Candidates (includes write-in candidates)

Federal	Cuyahoga County
5 US Senate	46 Judicial
21 US House of Representatives	65 State Central Committee (includes 1 Green Party County Central Committee)
State	1,084 Democratic County Central Committee
4 Governor & Lt. Governor	11 withdrawn candidates. Their names will appear on the ballot, but votes cast will not be counted.
4 Attorney General	
4 Auditor	
4 Secretary of State	
3 Treasurer	
7 State Senate	
37 State Representative	
5 Ohio Supreme Court	

## Poll Workers:

- 471 Polling Location Coordinators
- 471 Voter Assistance Judges
- 3,204 Judges
- 1,068 Presiding Judges
- **5,214 Total**

## The Ballot:

- 7 Types - Democrat, Republican, Green, Libertarian, Constitution, Socialist, Issues Only
- **1,835** Number of ballot styles (precincts & ballot rotation)
- **7,644** Number of unique ballots

## Voting Devices:

- Each voting location:  
1 Election Systems and Software (ES&S) AutoMARK for ADA compliance
- Each precinct:  
1 ES&S DS200 Scanner per precinct
- Each voter:  
Optical scan paper ballots will be used by voters

## Voter Deadlines:

- March 30 Vote by Mail and in-house voting opens
- April 5 Registration Closes
- May 1 Vote by Mail application deadline
- May 3 Voted ballots must be postmarked on or before May 3 and arrive on or before May 14.