

May 3, 2011 Primary Election Official Canvass Certification Data

FINAL RESULTS

Final Election Results for the May 3, 2011 Primary Election are attached in the "Election Summary Report."

NOTE: Issue 6 (Olmsted Falls CSD) and Issue 8 (Strongsville CSD) include precincts from Lorain County. The Cross Over County Election Results are also attached for certification.

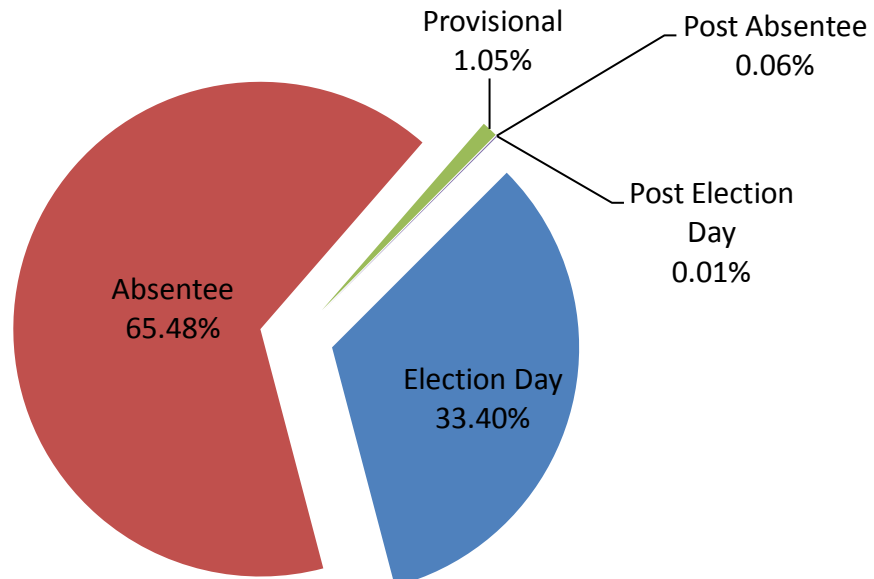
SUMMARY OF OFFICIAL CANVASS

There were 77,435 ballots counted for the May 3, 2011 Primary Election. Below is a breakdown of the ballots counted by category and a percentage of the total vote by category.

Category	Ballots Cast	% of Total Ballots Counted
<i>Election Day</i>	25,865	33.40%
<i>Absentee</i>	50,705	65.48%
<i>Provisional</i>	810	1.05%
<i>Post Absentee</i>	50	0.06%
<i>Post Election Day</i>	5	0.01%

Total **77,435**

Ballots Counted



ABSENTEE / VOTE BY MAIL

Voters requested 60,764 Absentee / Vote by Mail Ballots. Of those requests, 52,272 were returned (86.02%). The Ballot Department tabulated 50,755 Absentee / Vote by Mail Ballots (83.52%). The remaining 1,517 ballots (2.9%) were challenged for the following reasons:

Absentee Challenge Category	Number of Challenged Ballots	% of Total Challenged Absentee
RETURNED TOO LATE	608	40.08%
NO PRINTED NAME ON ID ENVELOPE	315	20.76%
NO SIGNATURE ON ID ENVELOPE	127	8.37%
ID ENVELOPE NOT COMPLETED	100	6.59%
ID ENVELOPE NOT RETURNED	100	6.59%
NO 10-Z FORM RETURNED WITH BALLOT	90	5.93%
NO IDENTIFICATION	79	5.21%
BALLOT NOT IN ID ENVELOPE	57	3.76%
NO BALLOT RETURNED WITH ID ENVELOPE	30	1.98%
ID ENVELOPE NOT SEALED	6	0.40%
INVALID SIGNATURE ON ID ENVELOPE	2	0.13%
NO STUB OR STUB REMOVED	2	0.13%
RETURN BALLOT TO POLLING LOCATION	1	0.07%

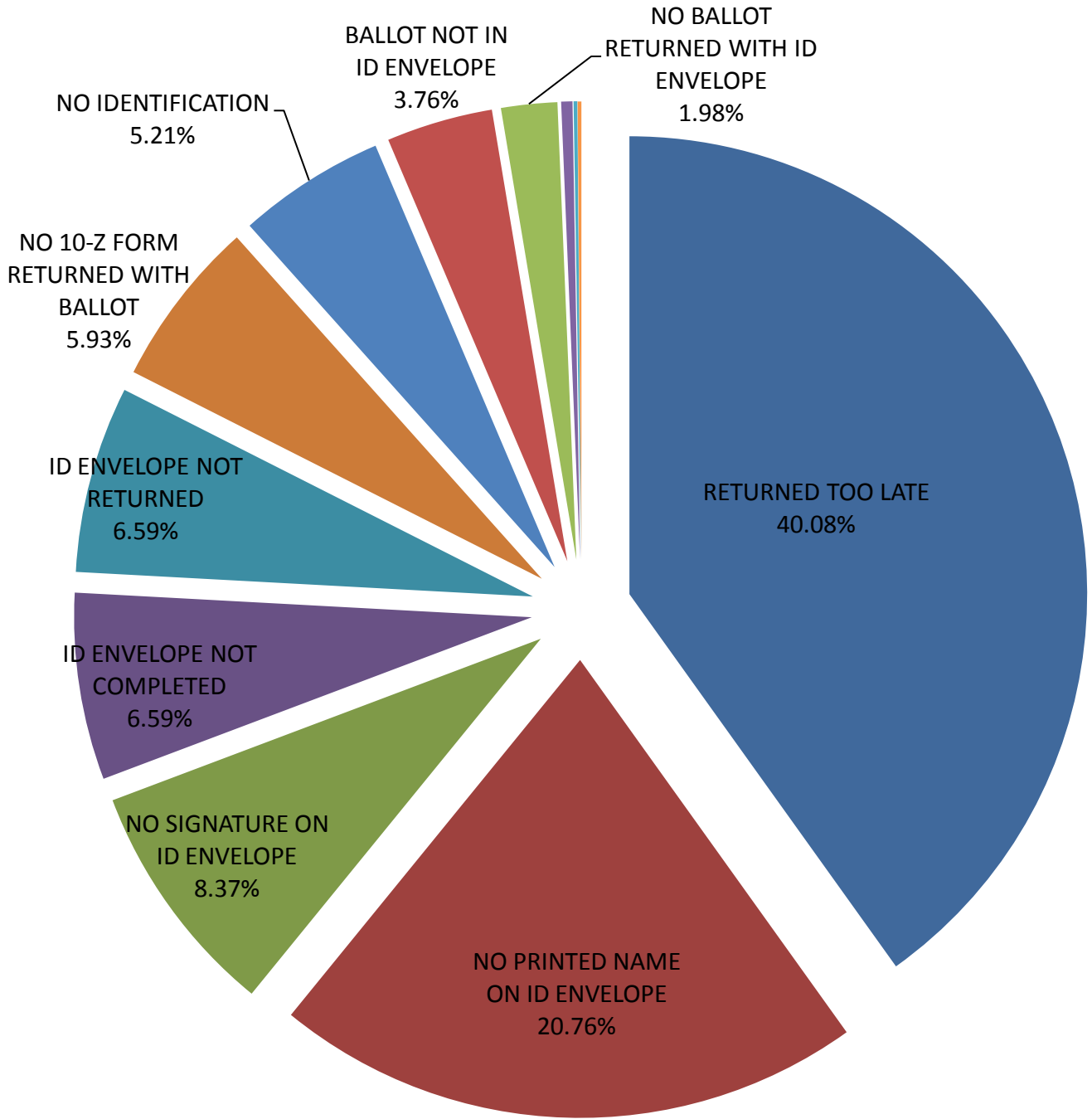
Total

1,517

Challenge Report	
Total Ballots - COUNTED	77,435
Absentee Ballots - COUNTED	50,755
Absentee Ballots - CHALLENGED	1,970
Absentee Ballots Challenged - LATE RETURN	608
Challenges - NOT CORRECTED	1,517
Challenges - CORRECTED	453
% Challenged of Absentee Ballots Cast	3.74%
% Challenged Not Including Late	2.58%
% - Corrected of All Challenges	22.99%
% - Corrected Not Including Late	33.26%



% of Total Challenged Absentee



PROVISIONAL VOTING SUMMARY

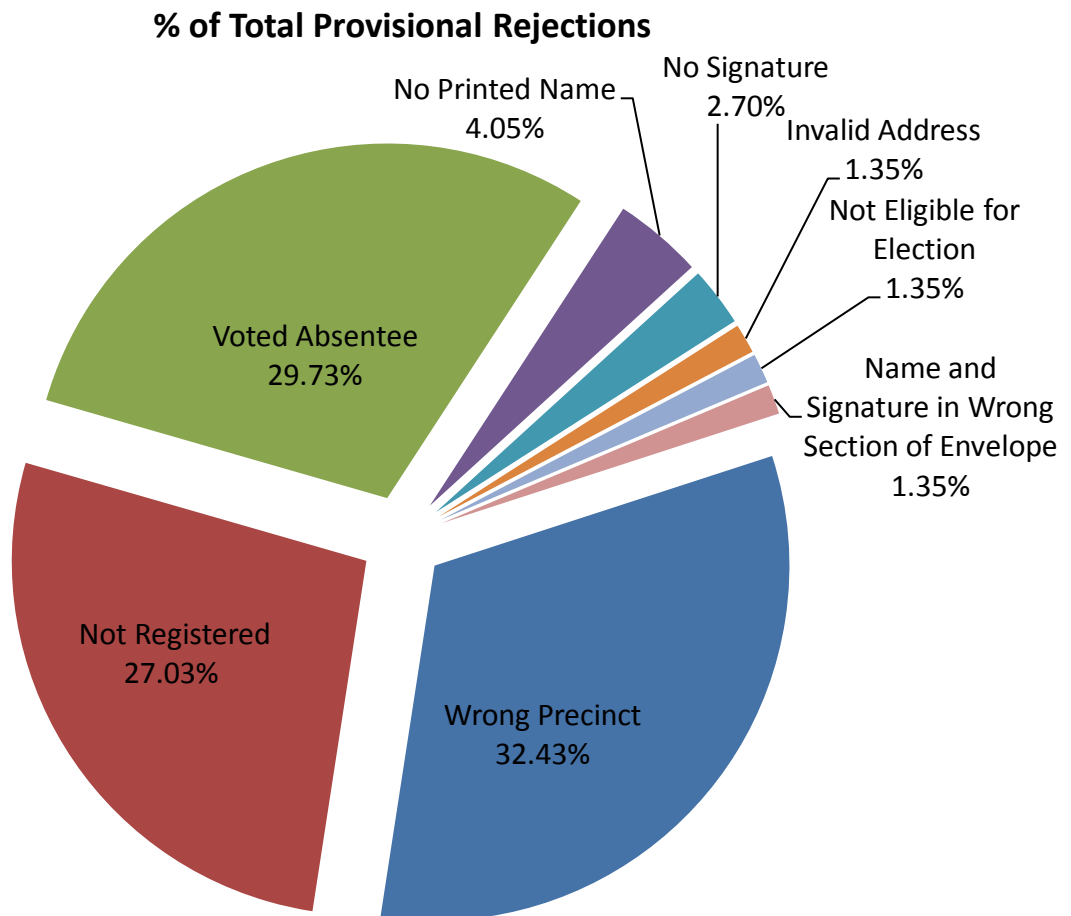
A total of 884 Provisional Ballots was cast on Election Day and in-house (Absentee Provisional). Of those 884 ballots, the Ballot Department tabulated 810 ballots. The remaining 74 (8.37%) Provisional Ballots were rejected for the following reasons.

Reason for Rejection	# Rejected	% of Total Provisional Rejections
<i>Wrong Precinct*</i>	24	32.43%
<i>Not Registered</i>	20	27.03%
<i>Voted Absentee</i>	22	29.73%
<i>No Printed Name</i>	3	4.05%
<i>No Signature</i>	2	2.70%
<i>Invalid Address</i>	1	1.35%
<i>Not Eligible for Election</i>	1	1.35%
<i>Name and Signature in Wrong Section of Envelope</i>	1	1.35%

Total

74

* 18 of the 24 Wrong Precinct Ballots were cast at the correct location. All of the “Wrong Precinct” ballots were cast at the polls on Election Day.



BALLOT REMAKES

During the election, 162 ballots were remade in accordance with the CCBOE Remake Procedure (approved by the Board on August 4, 2010). During the Unofficial Canvass, the Ballot Department processed 157 ballot remakes and the remaining 5 remake ballots during the Official Canvass. The following is a breakdown by category of the ballot remakes:

Reason for Remake	Number of Remakes	% of Total Remakes
1 - Ripped or torn ballot.	100	61.73%
3 - One choice is crossed out, the intent is clear.	13	8.02%
4 - One choice has been erased.	9	5.56%
5 - A dot or resting mark occurs on one contest.	32	19.75%
6 - Whiteout has been used on an oval.	4	2.47%
7 - Dash marks are made outside of the ovals and nothing is inside of the ovals.	1	0.62%
8 - The majority of ovals are marked with an "X" or check mark.	1	0.62%
11 - Words were used instead of filling in the ovals, the intent is clear.	1	0.62%
17 Year Old Voter Remakes	1	0.62%
TOTAL REMAKES	162	

Stage of Election	Number of Ballots Remade	% of Total Remakes
<i>Unofficial</i>	157	96.91%
<i>Official</i>	5	3.09%
Total	162	

OVER VOTES

Fifty-four (54) over votes were recorded and the total over vote rate is 0.04%. The exact number of over votes is unknown because the Unity system reports over votes on a per-contest basis, thus a ballot containing multiple over votes is recorded multiple times. The following is an overview of the over votes:

Contest	# of Over Votes	Total Votes	Over Vote %
BEREA COUNCIL WARD 01	0	401	0.00%
BEREA MAYOR	2	2,720	0.07%
BEREA PRESIDENT OF COUNCIL	0	2,532	0.00%
NEWBURGH HEIGHTS VILLAGE MAYOR	0	365	0.00%
PARMA COUNCIL WARD 03	2	1,120	0.18%
PARMA COUNCIL WARD 05	1	1,672	0.06%
PARMA MAYOR	2	12,969	0.02%
STRONGSVILLE COUNCIL WARD 02	6	2,858	0.21%
STRONGSVILLE COUNCIL WARD 03	1	3,142	0.03%
STRONGSVILLE COUNCIL WARD 04	0	2,349	0.00%
1 - BRECKSVILLE/BROADVIEW HTS CSD	2	8,887	0.02%
2 - EUCLID CSD	7	7,159	0.10%
3 - GARFIELD HTS CSD	3	5,174	0.06%
4 - GARFIELD HTS CSD RENEWAL	1	5,152	0.02%
5 - MAPLE HTS CSD	2	3,065	0.07%
6 - OLMSTED FALLS CSD	3	5,262	0.06%
7 - PARMA CSD	13	28,898	0.04%
8 - STRONGSVILLE CSD	6	11,632	0.05%
9 - BRECKSVILLE CH AMENDMENT	2	4,629	0.04%
10 - FAIRVIEW PARK ZONING AMENDMENT	0	2,475	0.00%
11 - OLMSTED FALLS PROPOSED TAX LEVY	0	2,189	0.00%
12 - PARMA-04-G LOCAL OPTION SUNDAY SALES	0	30	0.00%
13 - WARRENSVILLE HTS PROPOSED TAX LEVY	1	1,363	0.07%
Total	54	149,924	0.04%

POLL BOOK JUSTIFICATION

Out of the 292 precincts in this election, currently there are three (3) precincts with discrepancies between the number of signatures in the Alphabetical Poll Books and the number of ballots cast in Unity.

Difference in Signatures to Ballots Cast	Occurrences
1	2 precincts
2	1 precinct

RECOUNTS

There were no automatic or requested recounts for this election.

POST-ELECTION AUDIT

(Issue #7 – Parma CSD Tax Levy)

On June 6, 2011 the Cuyahoga County Board of Election conducted the Post Election Audit for the May 3, 2011 Primary Election in accordance with SOS Directive 2010-101 (the latest audit directive received). A total of 29,094 ballots were cast in Parma CSD Proposed Tax Levy (Issue #7). The required numbers of ballots to audit are:

- 3% - 873 – Stage 1
- 3% - 873 (if necessary) – Stage 2

Two precincts were randomly selected:

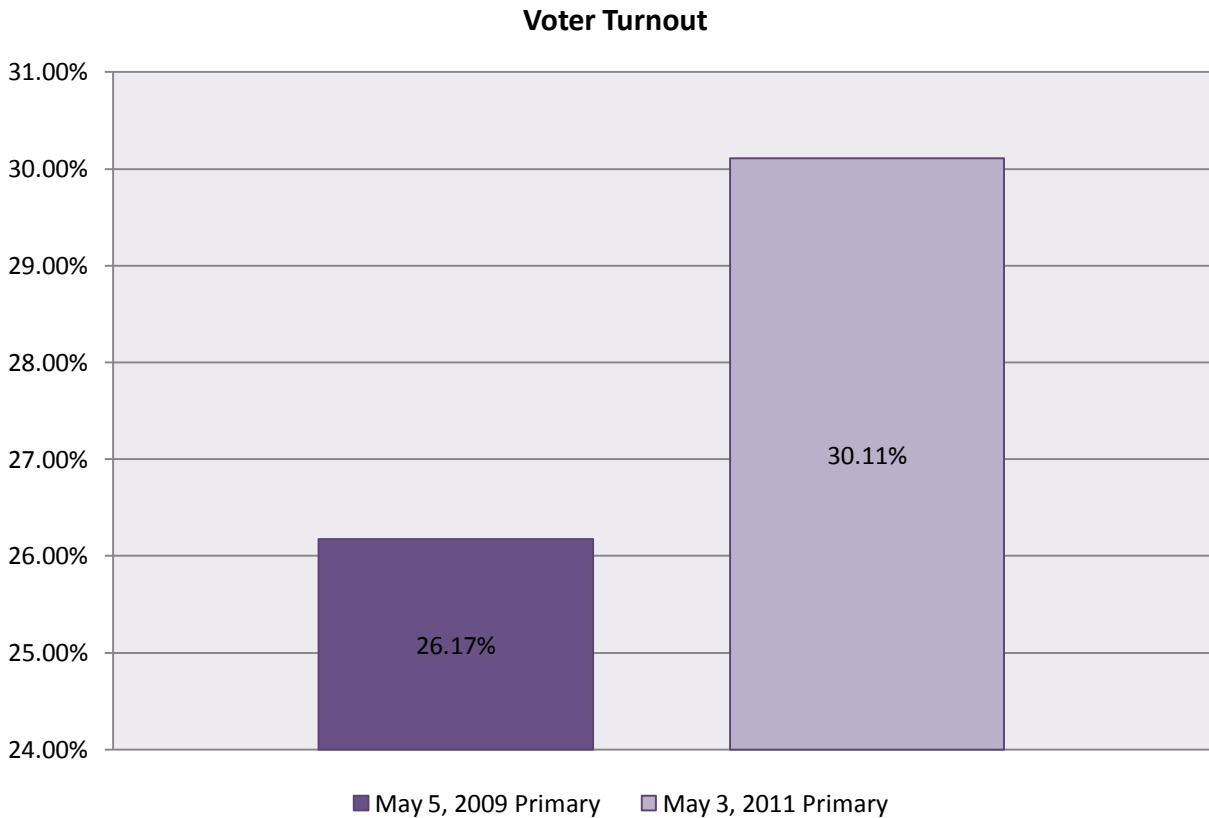
- Parma 05-C – 586 ballots
 - Parma Heights 00-H - 372 Ballots
- Total Ballots = 958 Ballots (3.3%)

The hand count of the 958 ballots matched the Certified Official Results exactly. It was not necessary to conduct stage 2 of the Post Election Audit according to SOS Directive 2010-101. The error rate for the May 3, 2011 Primary Election was 0%.

HISTORICAL DATA FOR MUNICIPAL PRIMARIES

The following data sets and graphs include comparisons related to election information and voting method distributions (ballot categories). Until the November 2009 General, the only categories used were Election Day, Absentee, and Provisional. In the subsequent elections, election reporting included Post Election and Post Election Day categories. In order to provide a complete comparison, the May 3, 2011 Primary vote totals were consolidated: Post Absentee was added to Absentee and Post Election Day was added to Election Day.

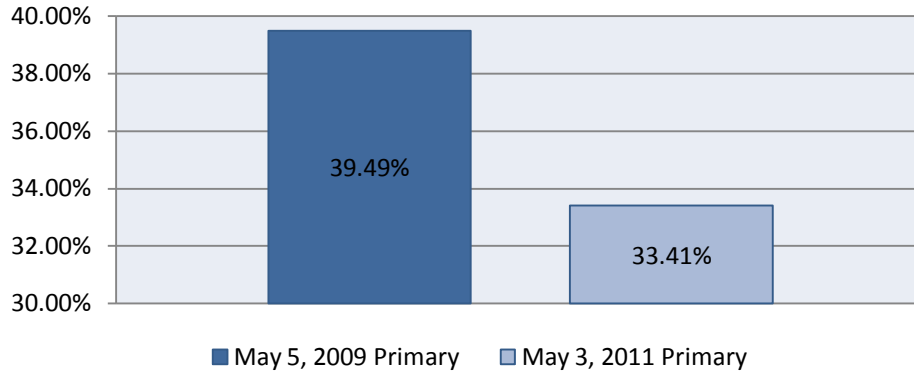
	May 5, 2009 Primary	May 3, 2011 Primary
Precincts	293	292
Registered Voters	276,906	257,187
Ballots Cast - Counted	72,477	77,435
<i>Election Day</i>	28,620	25,870
<i>Absentee</i>	42,991	50,755
<i>Provisional</i>	866	810
Voter Turnout	26.17%	30.11%



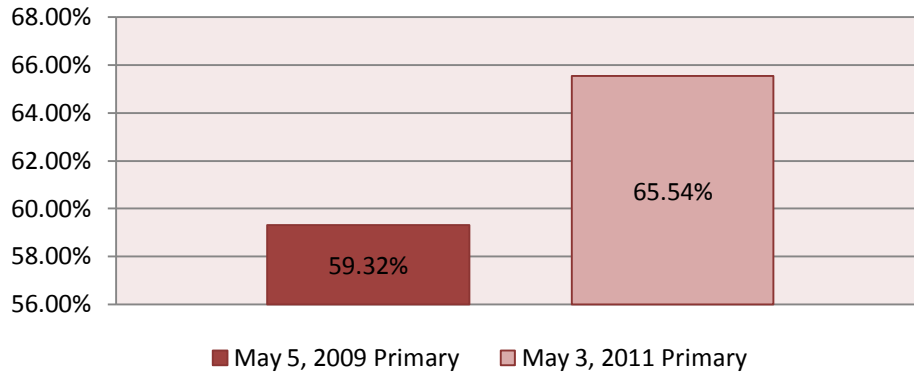


	May 5, 2009 Primary	May 3, 2011 Primary
Election Day	39.49%	33.41%
Absentee	59.32%	65.54%
Provisional	1.19%	1.05%

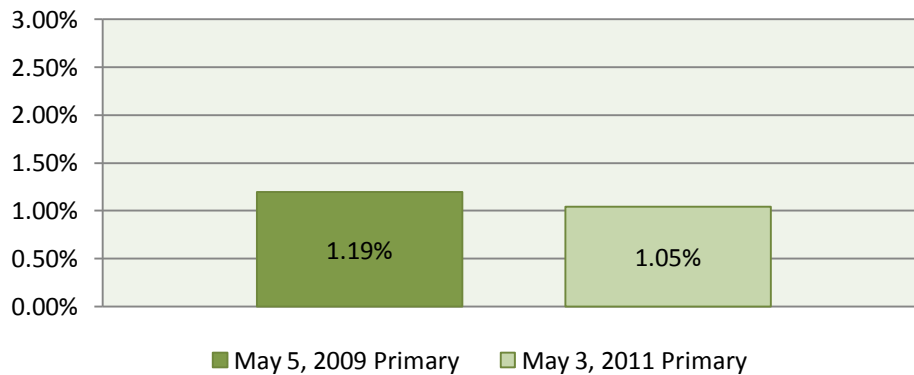
Election Day Voting Trend



Absentee Voting Trend



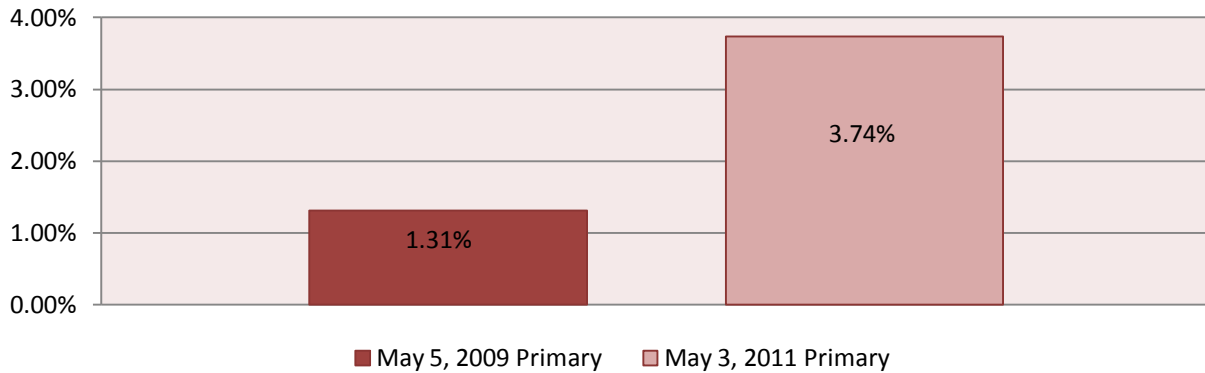
Provisional Voting Trend





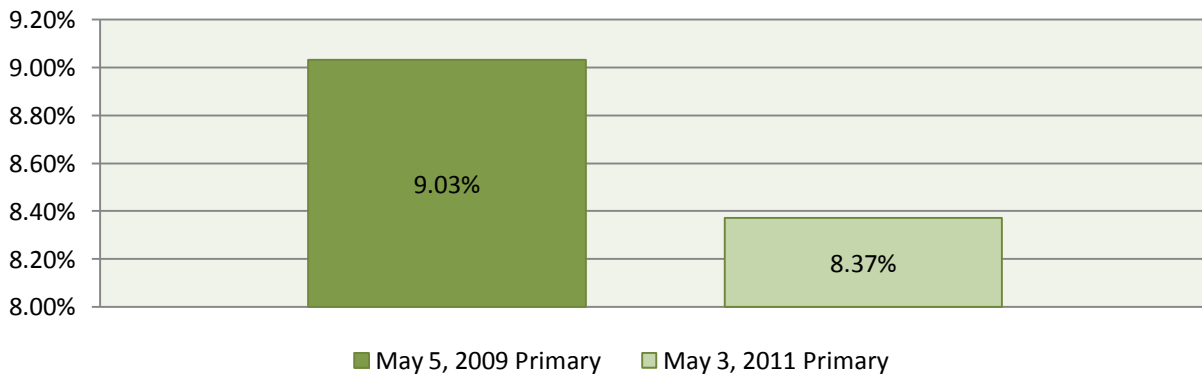
	May 5, 2009 Primary	May 3, 2011 Primary
Total Ballots - COUNTED	72,477	77,435
Absentee Ballots - COUNTED	42,991	50,755
Absentee Ballots - CHALLENGED	572	1,970
% Challenged of Absentee Ballots Cast	1.31%	3.74%

Absentee Challenge Rate



	May 5, 2009 Primary	May 3, 2011 Primary
Total Ballots - COUNTED	72,477	77,435
Provisional Ballots - CAST	952	884
Provisional Ballots - COUNTED	866	810
Provisional Ballots - REJECTED	86	74
% -Provisional Ballots - REJECTED	9.03%	8.37%

Provisional Rejection Rate



ELECTION DATA FROM THE LAST 10 YEARS

(insert Matt's chart here)