

DS200 Security Record | November 5, 2019

«Poll_Name»

«Abbreviation»

Monday Night Recordings

Ballot Box Left Side (DO NOT REMOVE)	Ballot Box Right Side (DO NOT REMOVE)
1. <input type="text"/>	2. <input type="text"/>
Ballot Box Lid Left Side (DO NOT REMOVE)	Ballot Box Lid Right Side (DO NOT REMOVE)
3. <input type="text"/>	4. <input type="text"/>
Emergency Ballot Compartment (DO NOT REMOVE)	
5. <input type="text"/>	
Ballot Compartment Door Monday Night Beginning Seal	Ballot Compartment Door Monday Night Closing Seal
6. <input type="text"/>	7. <input type="text"/>
Replacements (if necessary)	
<input type="text"/>	<input type="text"/>

Tuesday Morning Recordings

Ballot Compartment Door	
8. <input type="text"/>	
Inside Front Flap (DO NOT REMOVE)	Maintenance Panel (DO NOT REMOVE)
9. <input type="text"/>	10. <input type="text"/>
DS200 Display Screen	Memory Stick Cover (DO NOT REMOVE)
11. <input type="text"/>	12. <input type="text"/>
Replacements (if necessary)	
<input type="text"/>	<input type="text"/>

Tuesday Night Recordings

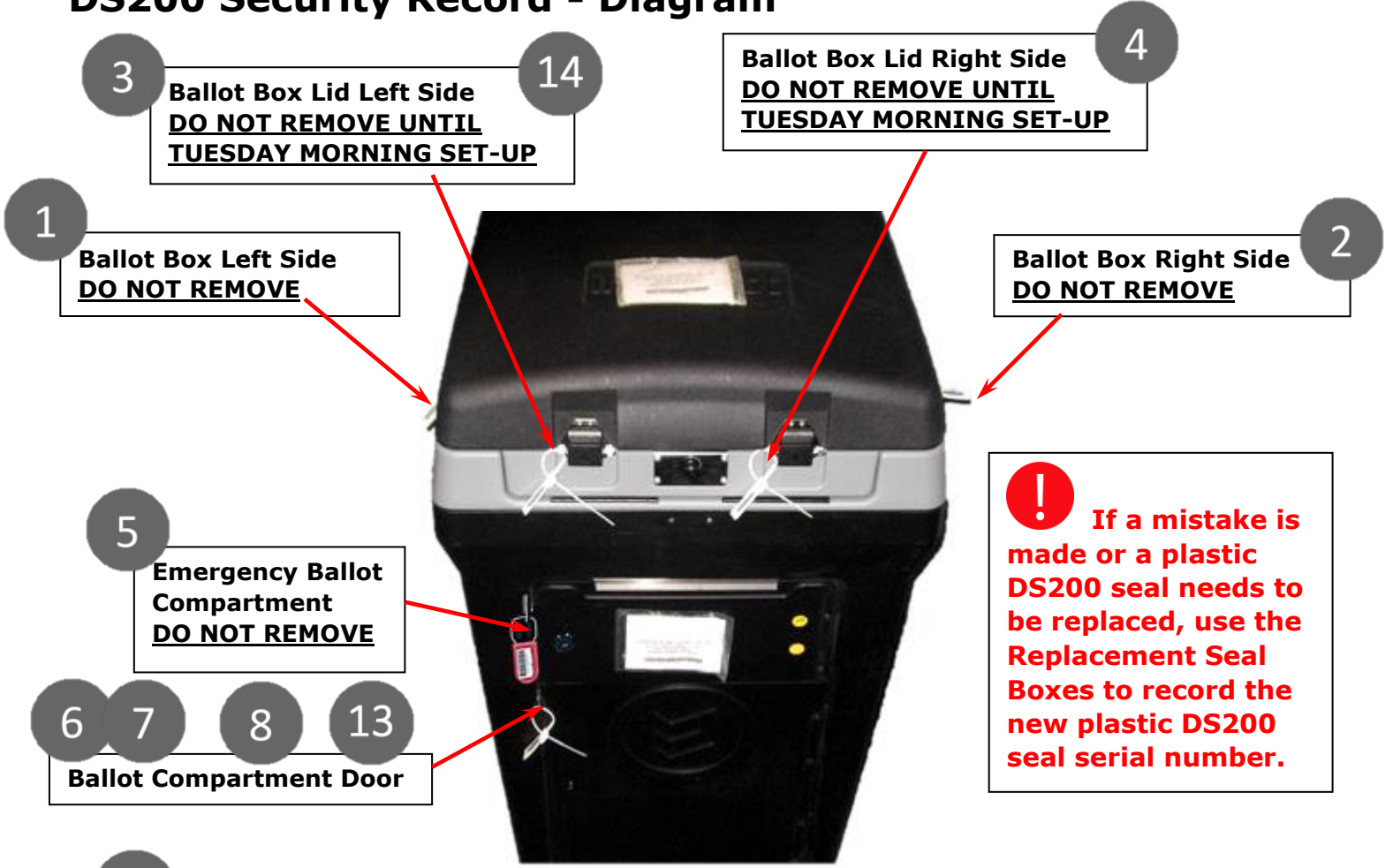
Ballot Compartment Door	Ballot Box Lid
13. <input type="text"/>	14. <input type="text"/>

Signature of Election Official

Signature of Opposing Party Election Official

Pack me inside:
Any GRAY Ballot Box

DS200 Security Record - Diagram



! If a mistake is made or a plastic DS200 seal needs to be replaced, use the Replacement Seal Boxes to record the new plastic DS200 seal serial number.



9 Inside Front Flap
DO NOT REMOVE



12 Memory Stick Cover
DO NOT REMOVE

! Replacement plastic DS200 seals can be found in the Clear Plastic Envelope located in the Gray Ballot Box on Monday Night or in the Blue Location Supply Bag on Tuesday Morning.